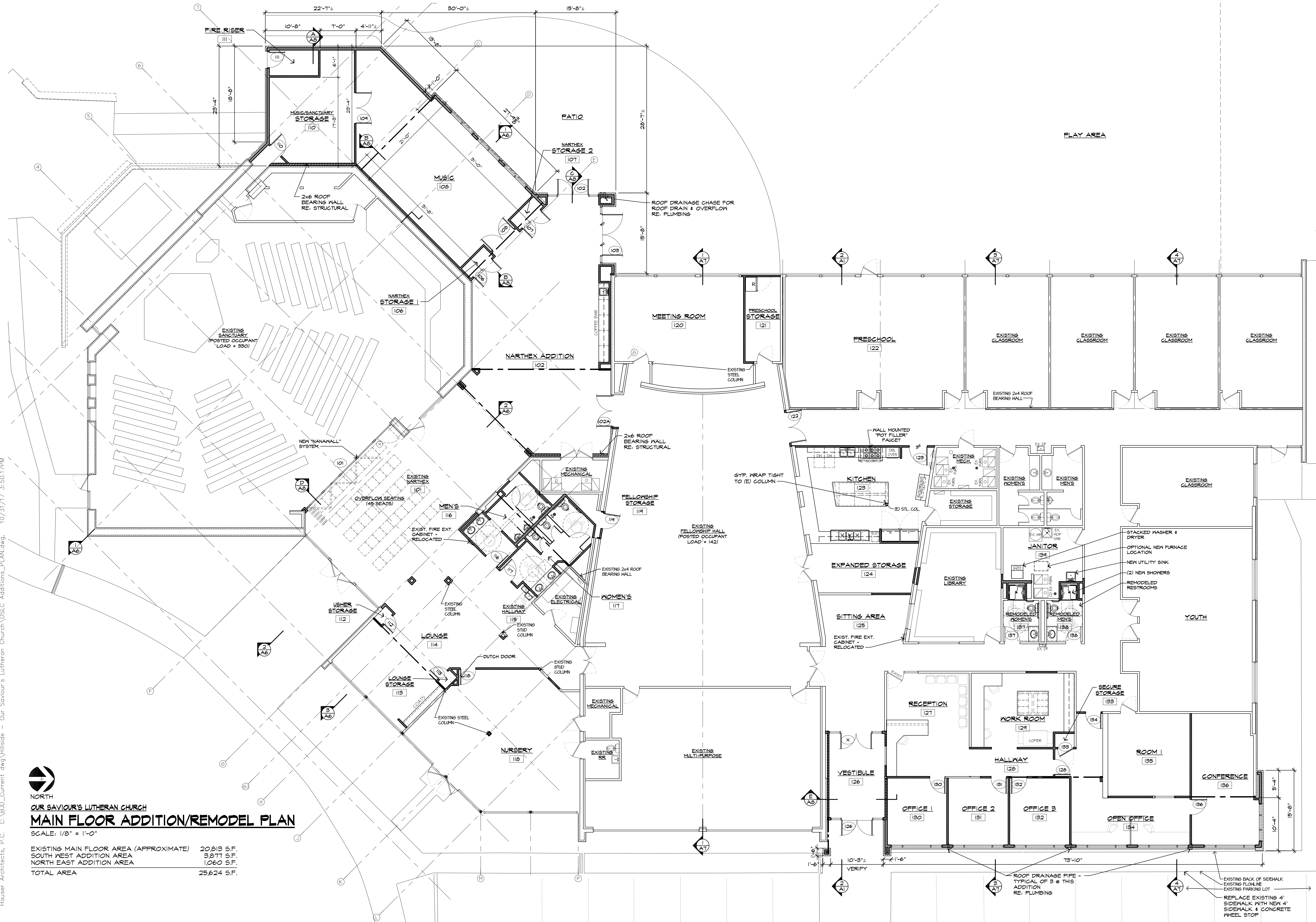


Hauser Architects, P.C. C:\Bld_Current_dwg\Hillside - Our Saviour's Lutheran Church\OSLC Additions_PLAN.dwg. 10/31/17 3:50:17PM



NORTH
OUR SAVIOUR'S LUTHERAN CHURCH
MAIN FLOOR ADDITION/REMODEL PLAN
 SCALE: 1/8" = 1'-0"
 EXISTING MAIN FLOOR AREA (APPROXIMATE) 20,813 S.F.
 SOUTH WEST ADDITION AREA 3,877 S.F.
 NORTH EAST ADDITION AREA 1,060 S.F.
TOTAL AREA 25,624 S.F.

HAUSER
 ARCHITECTS
 3780 East 15th Street, Suite 201
 Loveland, Colorado 80538
 970.669.8220
 E-mail: info@hauserarchitects.com
 HauserArchitects.com

HILLSIDE
 Construction Inc
 216 Hemlock Street, Suite B
 Fort Collins, Colorado 80524
 (970) 567-1821
 Strogers@hillsidconst.com

Our Saviour's 2000 S. LEMAY AVENUE
LUTHERAN CHURCH
ADDITIONS & REMODEL
MAIN FLOOR ADDITION & REMODEL PLAN

PROJECT NO.	10311T
DRAWN	BUD
CHECKED	